

FAG

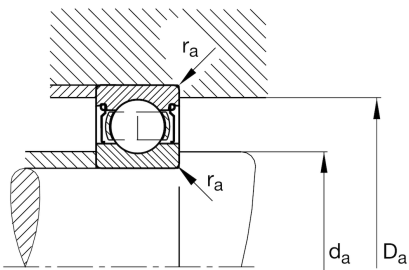
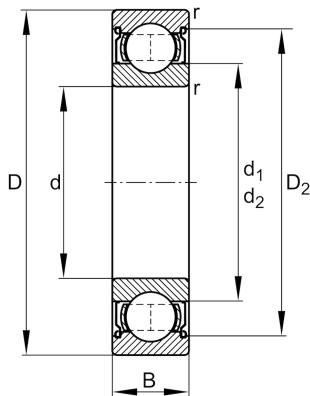
627-2Z

Deep groove ball bearing

Schaeffler ID:
0383910400000

Deep groove ball bearing 62...-2Z, single row, shields, steel sheet metal cage

Technical information

**Main Dimensions & Performance Data**

d	7 mm	Bore diameter
D	22 mm	Outside diameter
B	7 mm	Width
C_r	3,297 N	Basic dynamic load rating, radial
C_{0r}	1,368 N	Basic static load rating, radial
C_{ur}	74 N	Fatigue load limit, radial
n_G	40,000 1/min	Limiting speed
n_{gr}	28,000 1/min	Reference speed
	0.013 kg	Weight

Dimensions

r_{min}	0.3 mm	Minimum chamfer dimension
D_2	19.03 mm	Caliber diameter outer ring
d_2	10.5 mm	Caliber diameter inner ring

Mounting dimensions

d_{amin}	9.4 mm	Minimum diameter shaft shoulder
D_{amax}	19.6 mm	Maximum diameter of housing shoulder
r_{amax}	0.3 mm	Maximum fillet radius

Calculation factors

f_0	12.4	Calculation factor
-------	------	--------------------

Temperature range

T_{min}	-30 °C	Operating temperature min.
T_{max}	120 °C	Operating temperature max.